

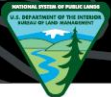


U.S. Department of the Interior
Bureau of Land Management

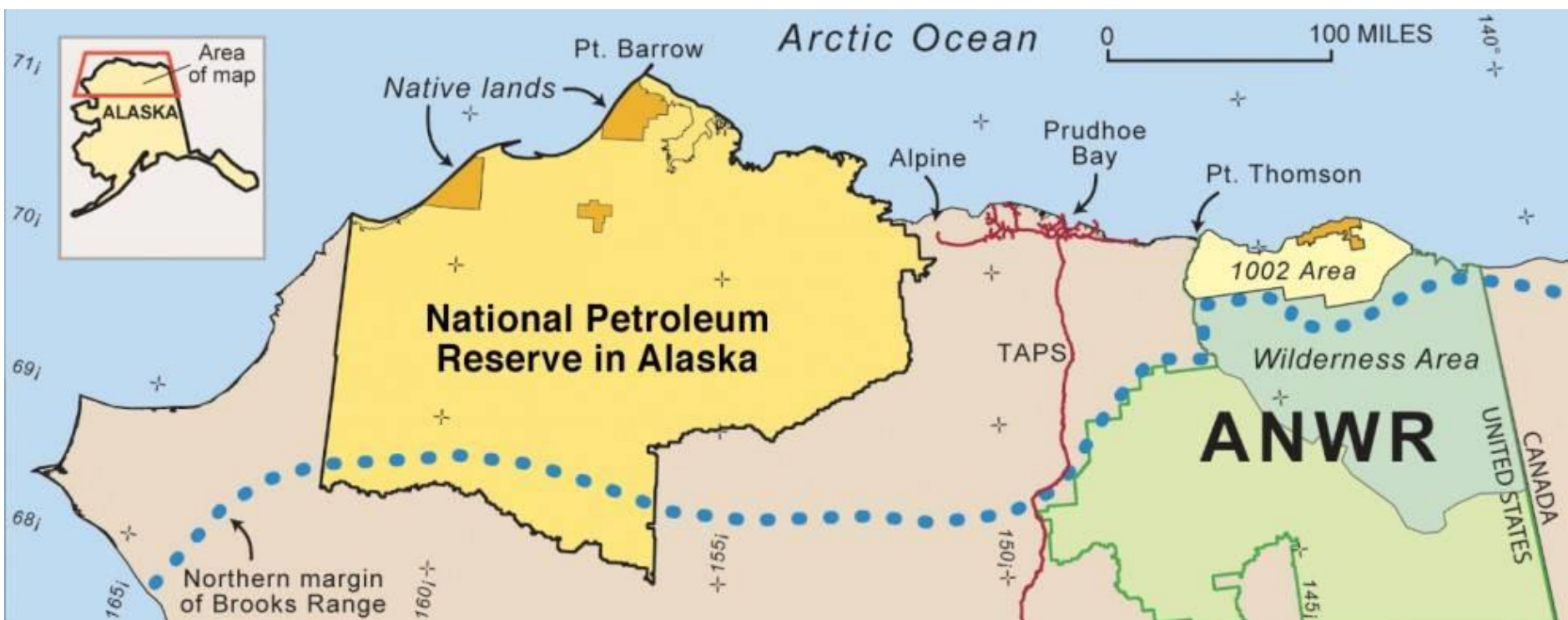
BLM Alaska Oil & Gas Leasing in the Arctic

Chad Padgett, BLM Alaska State Director



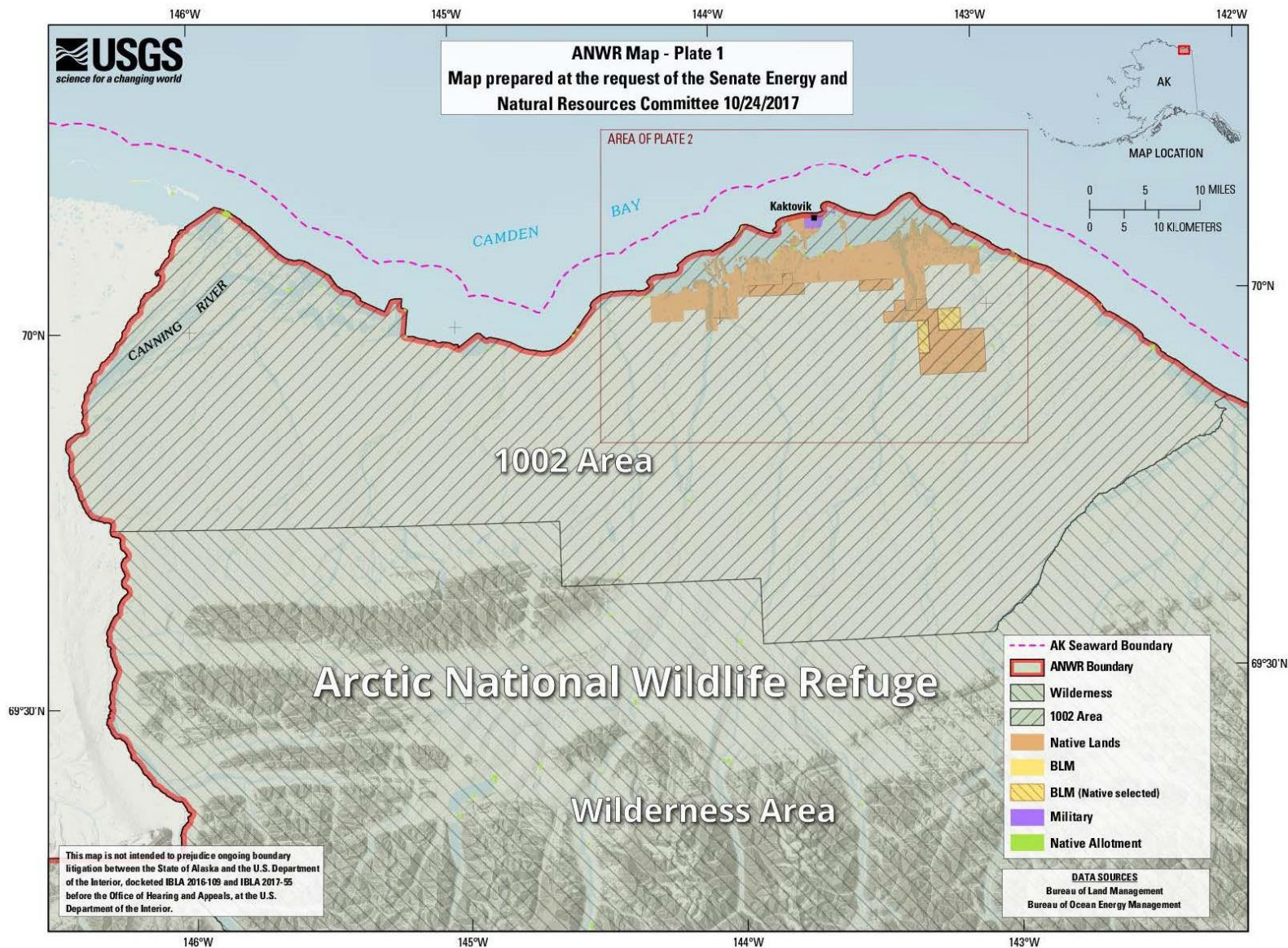


Federal lands available for leasing in the Arctic





Coastal Plain

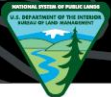




U.S. Department of the Interior
Bureau of Land Management

National Petroleum Reserve in Alaska





U.S. Department of the Interior
Bureau of Land Management

Greater Mooses Tooth 1 & 2

Date & Time: Fri Aug 11 12:41:47 AKDT 2017
Position: +070°15.19' / -151°29.53'
Altitude: 422ft
Datum: WGS-84
Azimuth/Bearing: 008°N08E 0142mils (Magnetic)
Elevation Angle: -08.9°
Horizon Angle: -05.3°
Zoom: 1X





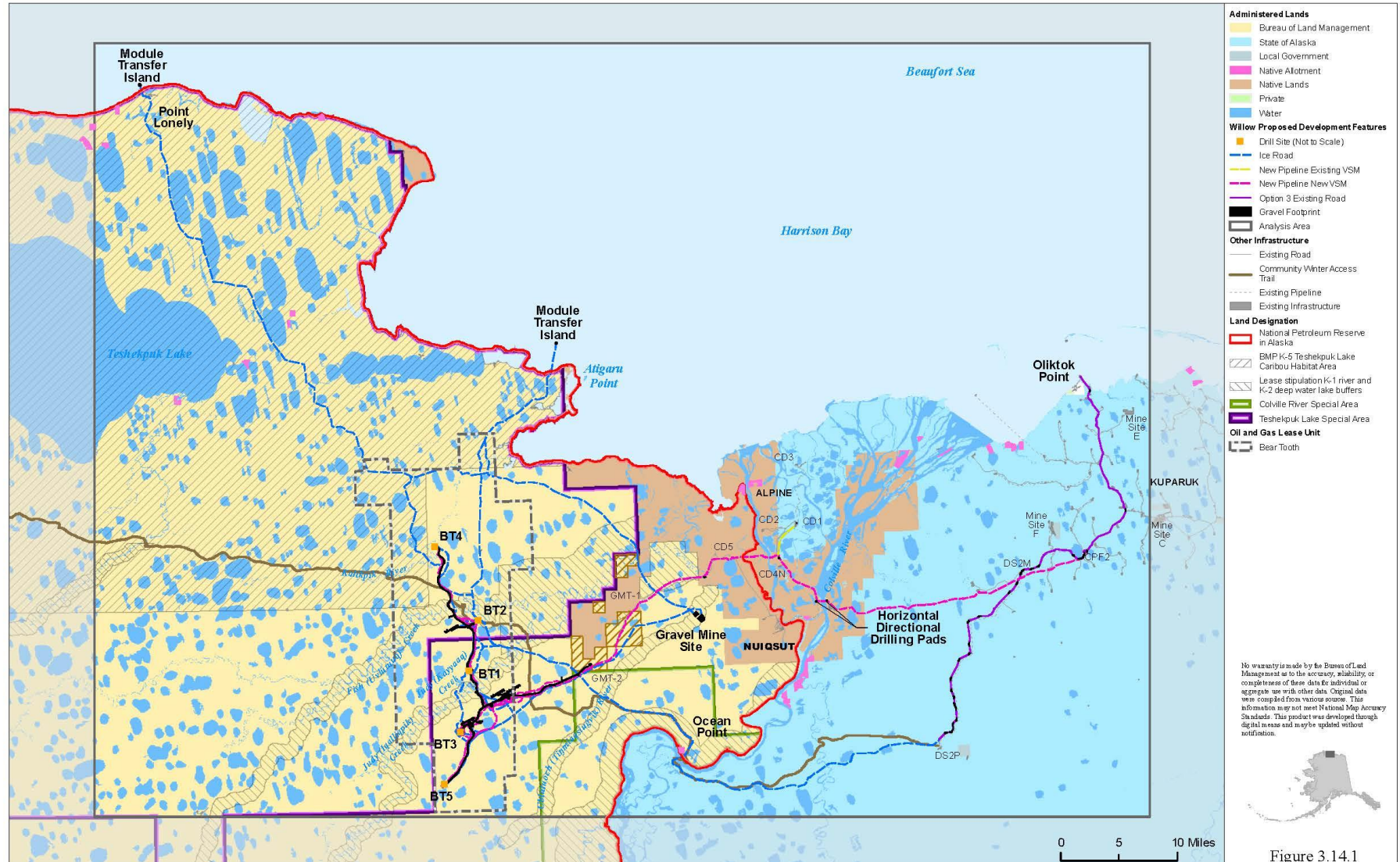
Willow Master Development Plan

Final Environmental Impact Statement

Land Ownership and Surface Jurisdiction in the Analysis Area

3.14 - Land Ownership and Use

U.S. DEPARTMENT OF THE INTERIOR | BUREAU OF LAND MANAGEMENT | ALASKA | WILLOW MASTER DEVELOPMENT PLAN



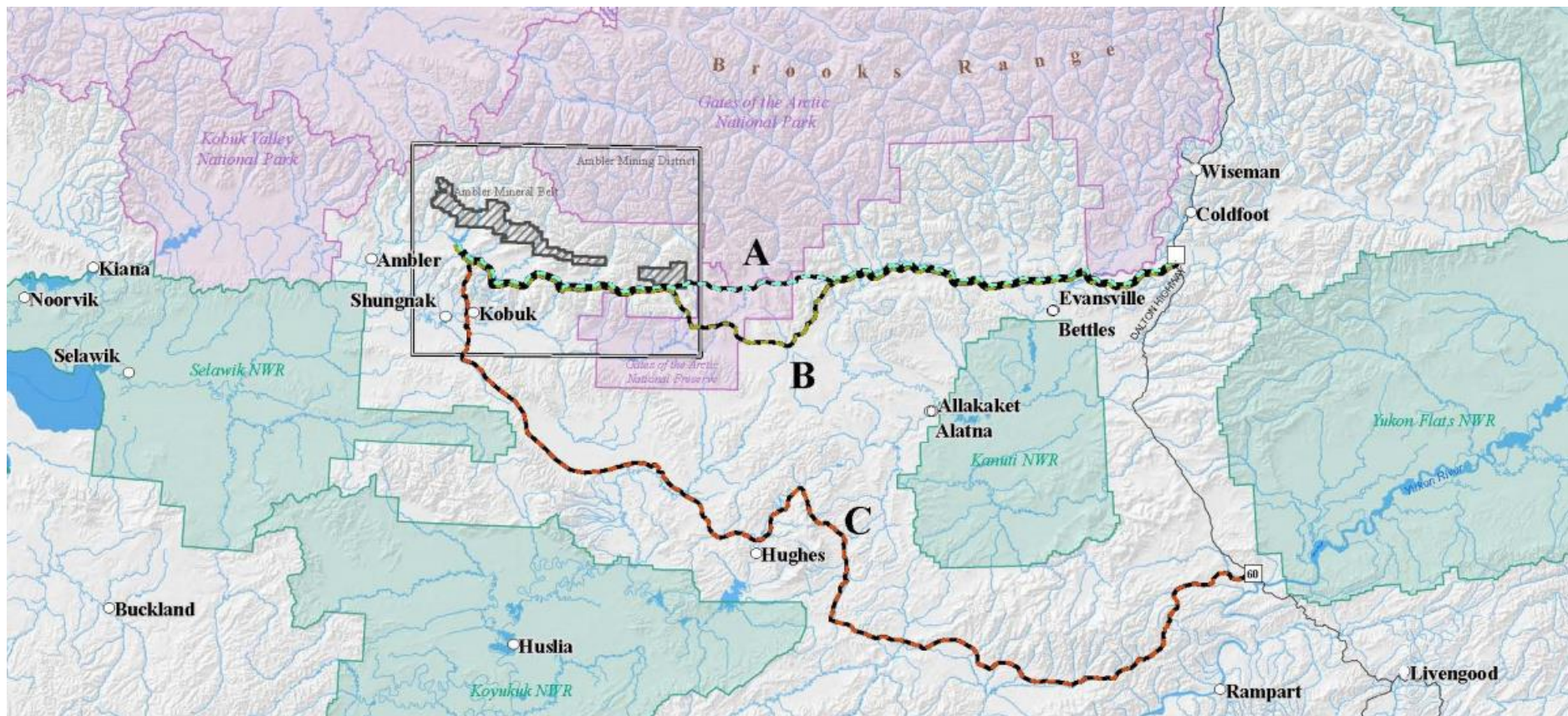
No warranty is made by the Bureau of Land Management as to the accuracy, reliability, or completeness of these data for individual or aggregate use with other data. Original data were compiled from various sources. This information may not meet National Map Accuracy Standards. This product was developed through digital means and may be updated without notification.



Figure 3.14.1

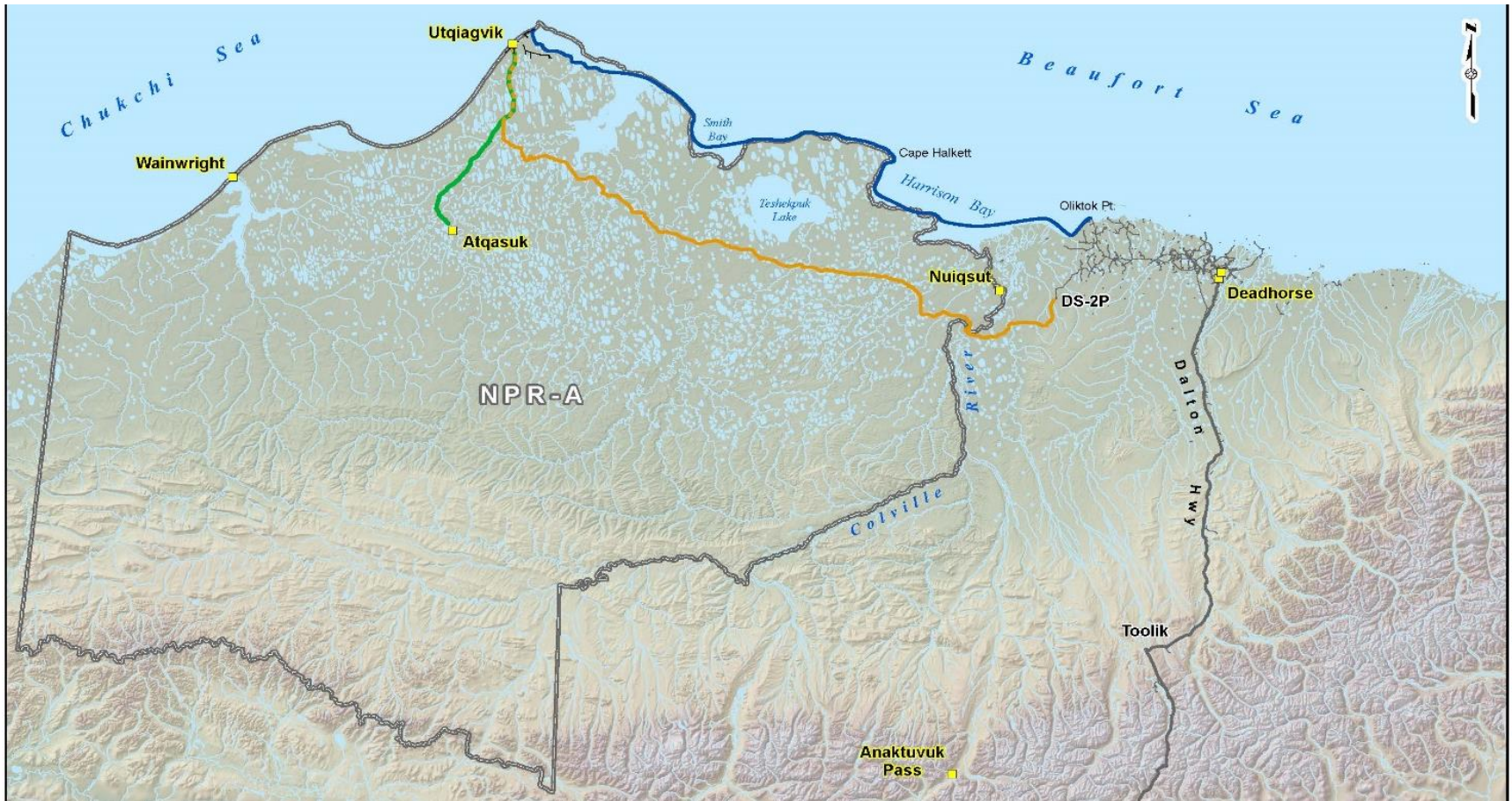


Ambler Industrial Access Road





NSB Community Winter Access Trails





Point Spencer Conveyance





U.S. Department of the Interior
Bureau of Land Management

State/Federal Cooperative Partnerships



Questions?

